

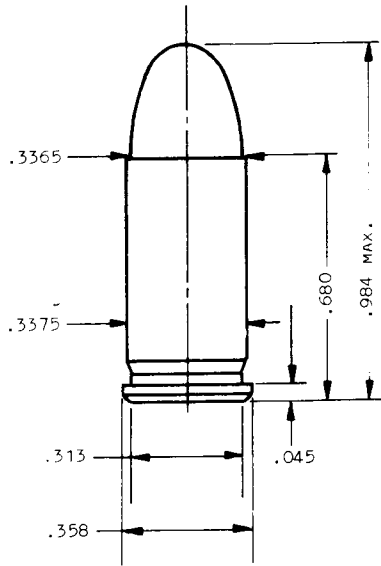
TIROPRACTICO

Tabelle di ricarica della Lyman per pistola

32 Automatic

(32 ACP)

(7.65mm Browning)



TEST COMPONENTS:

Cases Winchester
 Trim-to Length672"
 Primers Winchester 1½-108
 Primer Size Small Pistol
 Lyman Shell Holder No. 9
 Cast Bullets Used (size to .309" dia.)
 #311252, 77 gr.
 #313249, 84 gr.

TEST SPECIFICATIONS: (Velocity & Pressure)

Firearm Used Mauser HSc;
 also Special Test Barrel
 Barrel Length 3" (Mauser);
 3¼" (Special Barrel)
 Twist 1-16"
 Groove Diameter309"

COMMENTS:

A wide variation in groove diameters is present in hand-guns chambered for this cartridge.



#311252
 77 gr., (#2 Alloy) .975" OAL



#313249
 84 gr., (#2 Alloy) .984" OAL

Powder	Sug. Starting Grains	Velocity F.P.S.	Pressure C.U.P.	Max. Grains	Velocity F.P.S.	Pressure C.U.P.
700X	1.5	750	—	1.9	895	—
PB	1.6	665	—	2.2	870	—
SR-7625	1.7	675	—	2.3	860	—
Bullseye	1.5	685	—	2.0	830	—
Red Dot	1.5	695	—	2.3	940	—
Green Dot	1.6	705	—	2.4	895	—
Unique	1.8	625	—	2.6	860	—
**231	1.5	620	7,200	2.5	888	15,000
**HP38	1.5	688	9,200	*2.0	824	13,800

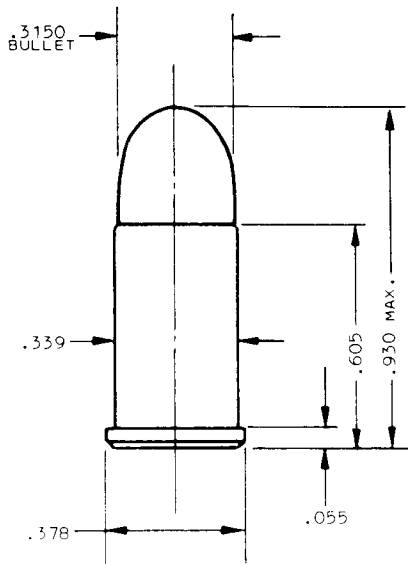
Powder	Sug. Starting Grains	Velocity F.P.S.	Pressure C.U.P.	Max. Grains	Velocity F.P.S.	Pressure C.U.P.
700X	1.3	685	—	1.7	830	—
PB	1.5	665	—	2.1	830	—
SR-7625	1.7	675	—	2.2	860	—
Bullseye	1.5	660	—	1.9	795	—
Red Dot	1.5	665	—	2.1	895	—
Green Dot	1.6	680	—	2.3	845	—
Unique	1.8	650	—	2.5	860	—
**630	3.5	649	7,700	5.1	882	14,400
**Trap 100	2.0	664	8,700	*2.8	814	13,700

Note: Loads shown in shaded panels are maximum.

* Designates potentially most accurate load.

** Designates special pressure test barrel.

32 Smith & Wesson



TEST COMPONENTS:

Cases Remington; Norma
 Trim-to Length600"
 Primers Winchester 1½-108
 Primer Size Small Pistol
 Lyman Shell Holder No. 9
 Cast Bullets Used (size to .310" dia.)
 #311252, 77 gr.
 #313249, 84 gr.

TEST SPECIFICATIONS: (Velocity)

Firearm Used Smith & Wesson Model 31
 Barrel Length 4"
 Twist 1-18¾"
 Groove Diameter312"

COMMENTS:

Use maximum loads only in solid frame revolvers. For top break models (in good condition) use only the suggested starting loads. Do not go higher as these pistols are of a relatively weak design.

Variations in groove diameter may be encountered. Slug your barrel before reloading and size your cast bullets to as near groove diameter as possible.



#311252
77 gr., (#2 Alloy) .860" OAL



#313249
84 gr., (#2 Alloy) .860" OAL

Powder	Sug. Starting Grains	Velocity F.P.S.	Pressure C.U.P.	Max. Grains	Velocity F.P.S.	Pressure C.U.P.
700X	1.3	598	—	1.8	758	—
PB	1.4	523	—	2.1	803	—
Bullseye	1.1	478	—	1.5	578	—
Red Dot	1.4	578	—	1.9	763	—
Green Dot	1.5	553	—	2.0	723	—
Unique	1.6	493	—	2.5	743	—
**231	1.9	641	—	*2.5	800	—
**HP38	1.4	642	—	2.2	821	—
**AL-120	1.3	537	—	1.8	721	—

Powder	Sug. Starting Grains	Velocity F.P.S.	Pressure C.U.P.	Max. Grains	Velocity F.P.S.	Pressure C.U.P.
700X	1.2	613	—	1.7	798	—
PB	1.3	543	—	1.9	768	—
**SR-7625	1.6	625	—	2.1	760	—
Bullseye	1.0	468	—	1.4	578	—
Red Dot	1.3	588	—	1.7	703	—
Green Dot	‡1.4	528	—	1.9	728	—
Unique	1.5	493	—	2.4	753	—
**630	2.5	485	—	4.0	726	—
**Trap 100	1.6	558	—	2.0	645	—

Note: Loads shown in shaded panels are maximum.

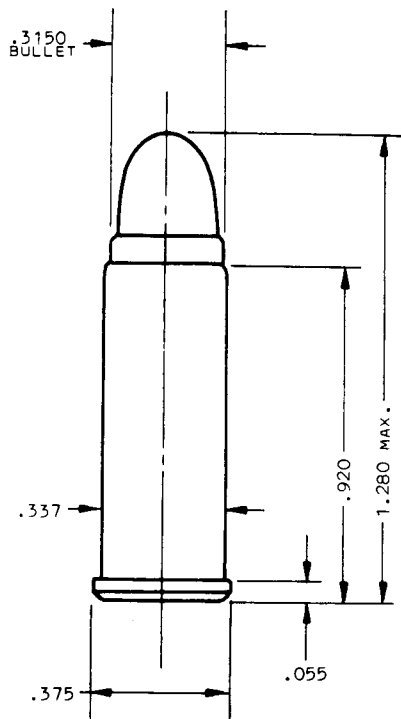
*Designates potentially most accurate load.

‡Designates factory velocity duplication load.

**Designates the use of Remington cases and primers.

.32 Smith & Wesson Long

(.32 Colt New Police)



TEST COMPONENTS:

Cases Remington
 Trim-to Length915"
 Primers Remington 1½
 Primer Size Small Pistol
 Lyman Shell Holder No. 9
 Cast Bullets Used (size to .312" dia.)
 #311252, 77 gr.
 #313226, 93 gr.
 #3118, 115 gr.

TEST SPECIFICATIONS: (Velocity Only)

Firearm Used Smith & Wesson Model 31
 Barrel Length 4"
 Twist 1-18¾"
 Groove Diameter312"

COMMENTS:

Use maximum loads only in solid frame revolvers. For top break models (in good condition) use only the suggested starting loads. Do not go higher because these pistols are of a relatively weak design.

Variations in groove diameter may be encountered. Slug your barrel before reloading and size your cast bullets to as near groove diameter as possible.



#311252
77 gr., (#2 Alloy) 1.115" OAL

Powder	Sug. Starting Grains	Velocity F.P.S.	Pressure C.U.P.	Max. Grains	Velocity F.P.S.	Pressure C.U.P.
Bullseye	1.5	513	—	3.0	958	—
Red Dot	1.8	588	—	3.3	1028	—
Green Dot	1.9	563	—	3.4	993	—
Unique	2.5	608	—	4.0	943	—
700X	1.8	598	—	3.3	1098	—
SR-7625	2.4	583	—	3.6	988	—
231	2.0	677	—	3.5	1043	—
Trap 100	1.7	645	—	3.5	1003	—
AL-120	1.9	635	—	3.5	1071	—

Note: Loads shown in shaded panels are maximum.
 *Designates potentially most accurate load.

.32 Smith & Wesson Long
(Continued)



#313226
 93 gr., (#2 Alloy) 1.185" OAL

Powder	Sug. Starting Grains	Velocity F.P.S.	Pressure C.U.P.	Max. Grains	Velocity F.P.S.	Pressure C.U.P.
Bullseye	1.5	518	—	2.9	898	—
Red Dot	1.7	548	—	3.0	943	—
Green Dot	1.8	528	—	3.1	893	—
Unique	2.4	543	—	3.7	883	—
700X	1.6	558	—	3.0	983	—
SR-7625	2.2	553	—	3.3	953	—
231	2.0	639	—	3.7	1064	—
HP38	1.9	738	—	3.3	1038	—
AL-120	2.0	657	—	3.5	1070	—



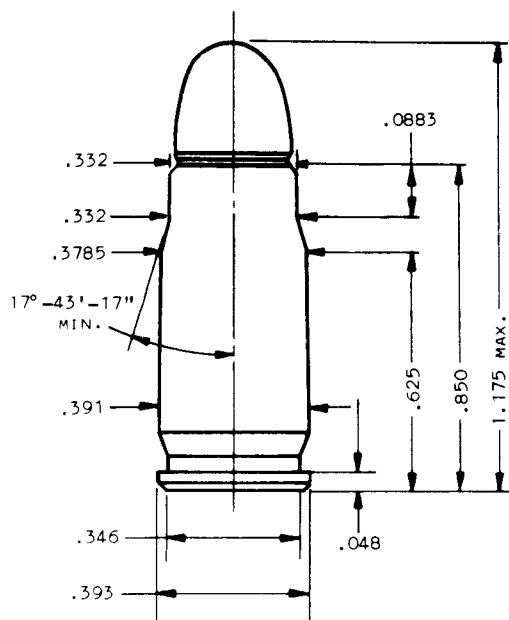
#3118
 115 gr., (#2 Alloy) 1.180" OAL

Powder	Sug. Starting Grains	Velocity F.P.S.	Pressure C.U.P.	Max. Grains	Velocity F.P.S.	Pressure C.U.P.
Bullseye	1.4	528	—	2.0	683	—
Red Dot	1.6	553	—	2.5	783	—
Green Dot	1.7	538	—	2.6	783	—
Unique	2.1	558	—	3.5	863	—
700X	1.5	548	—	2.4	818	—
SR-7625	1.9	538	—	3.0	863	—
630	4.0	611	—	*7.0	1046	—
HS-5	3.0	671	—	5.3	1102	—
AL-5	3.0	644	—	5.1	1003	—

Note: Loads shown in shaded panels are maximum.
 *Designates potentially most accurate load.

.30 Luger

(7.65mm)



COMMENTS:

Variations in groove diameters will be encountered with pistols chambered for this cartridge. For best results, it is recommended that you slug your barrel. Size cast bullets as near to the exact groove diameter as possible. When using cast bullet #313249, the case should be crimped on the leading edge of the first driving band.

With some pistols, the starting loads may not function the action. In such an instance, the load should be increased, but with caution.

TEST COMPONENTS:

Cases Remington
Trim-to Length845"
Primers Remington 1/2
Primer Size Small Pistol
Lyman Shell Holder No. 12
Cast Bullets Used (size to .309" dia.)
#313249, 84 gr.
#313226, 93 gr.

TEST SPECIFICATIONS: (Velocity)

Firearm Used Walther P-38
Barrel Length 4 15/16"
Twist 1-9.85"
Groove Diameter3085"



#313249
84 gr., (#2 Alloy) 1.125" OAL

Powder	Sug. Starting Grains	Velocity F.P.S.	Pressure C.U.P.	Max. Grains	Velocity F.P.S.	Pressure C.U.P.
700X	3.7	1143	—	4.2	1204	—
PB	4.0	1105	—	4.5	1177	—
SR-4756	966	—	5.6	1182	—	—
Bullseye	3.8	1106	—	4.5	1244	—
Red Dot	3.8	1116	—	4.3	1201	—
Green Dot	4.2	1111	—	4.7	1210	—
Unique	4.6	1110	—	5.2	1226	—
231	3.9	1054	—	4.4	1144	—
HS-5	5.4	1044	—	*6.0	1146	—



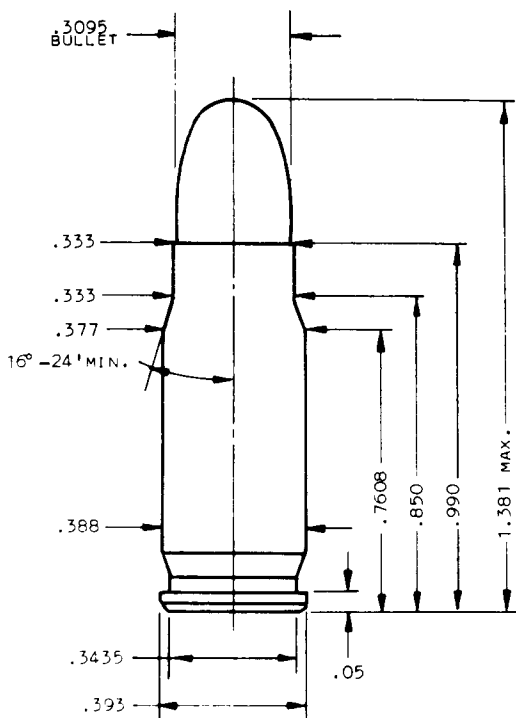
#313226
93 gr., (#2 Alloy) 1.150" OAL

Powder	Sug. Starting Grains	Velocity F.P.S.	Pressure C.U.P.	Max. Grains	Velocity F.P.S.	Pressure C.U.P.
700X	3.5	1037	—	4.0	1128	—
PB	3.9	1047	—	4.4	1126	—
SR-4756	4.6	960	—	5.1	1094	—
Bullseye	3.6	1026	—	4.4	1159	—
Red Dot	3.7	1065	—	4.2	1152	—
Green Dot	4.1	1065	—	4.6	1150	—
Unique	4.5	1046	—	5.1	1163	—
630	7.2	1091	—	8.2	1205	—
HS-5	5.3	1062	—	*5.8	1134	—

Note: Loads shown in shaded panels are maximum.
*Designates potentially most accurate load.

.30 Mauser

(7.63mm Mauser)



TEST COMPONENTS:

Cases Remington
 Trim-to Length985"
 Primers Remington 1½
 Primer Size Small Pistol
 Lyman Shell Holder No. 12
 Cast Bullets Used (size to .311" dia.)
 #313249, 84 gr.

TEST SPECIFICATIONS:

(Velocity)

Firearm Used Military Mauser
 Barrel Length 5½"
 Twist 1-8"
 Groove Diameter311"

COMMENTS:

Variations in groove diameter may be encountered. Slug your barrel for best results. If your barrel is larger than .309", we suggest that you use cast bullets sized as close to exact groove diameter as possible.



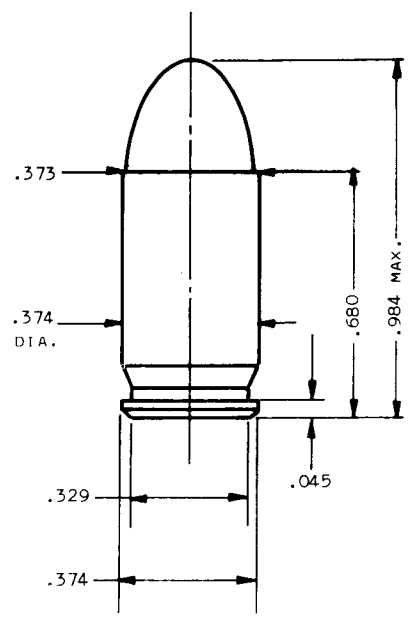
#313249
 84 gr., (#2 Alloy) 1.381" OAL

Powder	Sug. Starting Grains	Velocity F.P.S.	Pressure C.U.P.	Max. Grains	Velocity F.P.S.	Pressure C.U.P.
Bullseye	4.2	1128	—	5.0	1243	—
Red Dot	5.0	1065	—	5.6	1115	—
Unique	5.2	1018	—	6.8	1193	—

Note: Loads shown in shaded panels are maximum.

.380 Automatic

(9mm CORTO & 9mm SHORT)



TEST COMPONENTS:

- Cases Federal; Super Vel
- Trim-to Length677"
- Primers Winchester 1½-108
- Primer Size Small Pistol
- Lyman Shell Holder No. 26
- Cast Bullets Used (size to .355" dia.)
- #358242, 92 gr.
- #358242, 121 gr.

TEST SPECIFICATIONS: (Velocity and Pressure)

- Firearm Used Universal Receiver
- Barrel Length 3¼"
- Twist 1-16"
- Groove Diameter355"

COMMENTS:

While a wide variation in groove diameter may be encountered (as large as .362") in pistols chambered for this cartridge, the use of bullets larger than .355" is usually not possible. This is due to chamber and case dimensions. The larger diameter bullet will bulge the case to the point where the cartridge will not chamber. If the groove diameter of your pistol runs on the large size, accuracy will be poor and there is little you can do about it.

Heavier cast bullets of .355" diameter will sometimes cause a slight case bulge with some lots of brass. This is due to the inside taper of the case. It may be ignored as long as the cartridge will chamber and function properly.

#358242
92 gr. (#2 Alloy) .980" OAL

Powder	Sug. Starting Grains	Velocity F.P.S.	Pressure C.U.P.	Max. Grains	Velocity F.P.S.	Pressure C.U.P.
700X	1.9	695	11,100	2.5	900	15,800
PB	2.2	645	10,300	2.8	860	15,200
**SR-4756	2.8	653	6,900	4.1	970	15,600
Bullseye	2.4	750	11,800	3.0	915	16,000
Red Dot	2.0	690	11,000	2.6	880	15,200
Green Dot	2.1	655	10,000	3.0	910	16,000
Unique	3.1	755	11,800	3.7	920	16,000
**Blue Dot	4.0	667	7,000	5.5	961	14,600
**231	2.3	701	7,900	3.5	1000	15,600
**HS-5	3.1	658	6,400	*5.0	1023	15,900
**AL-5	3.0	644	6,600	5.0	1029	16,000

Note: Loads shown in shaded panels are maximum.
 *Designates potentially most accurate load.
 **Designates use of Federal cases.

**380 Automatic
(Continued)**



#358242
121 gr., (#2 Alloy) .980" OAL

Powder	Sug. Starting Grains	Velocity F.P.S.	Pressure C.U.P.	Max. Grains	Velocity F.P.S.	Pressure C.U.P.
700X	1.4	610	11,300	1.9	750	15,800
PB	1.7	605	10,800	2.2	750	15,800
**SR-4756	2.3	662	7,800	3.5	927	15,800
Bullseye	1.6	600	10,500	2.1	750	15,200
Red Dot	1.6	615	11,000	2.1	770	15,800
Green Dot	1.7	620	10,800	2.3	760	15,400
Unique	2.2	630	11,300	2.8	780	15,600
**Blue Dot	3.7	732	9,000	5.3	948	15,900
**231	2.1	718	9,200	3.2	946	15,800
**HS-5	2.6	619	6,300	4.2	934	15,000
**AL-5	2.7	657	7,400	4.3	934	15,500

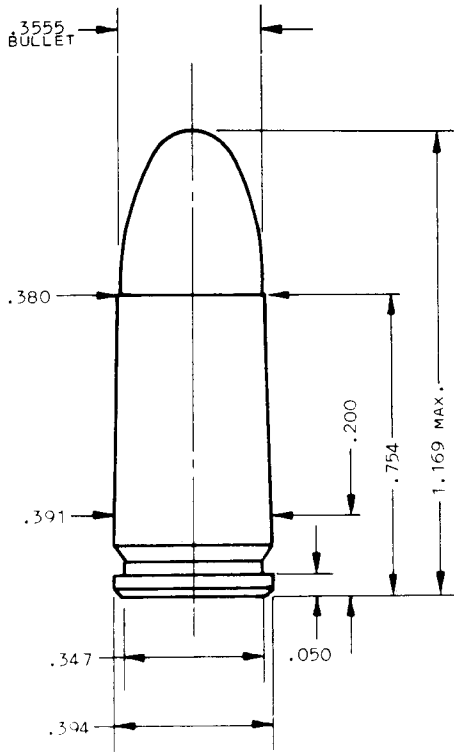
Note: Loads shown in shaded panels are maximum.

* Designates potentially most accurate load.

** Designates use of Federal cases.

9mm Luger

(9mm Parabellum)



COMMENTS:

Variations in groove diameter are often encountered with pistols chambered for this cartridge. However, the most common diameter is .354". Jacketed bullets of .355" may be used safely in all barrels ranging from .354" to .356". This particular cartridge headspaces on the case mouth and, therefore, the cases should not be crimped. Also, the trim-to-length should be adhered to closely. A short case or crimp on the mouth can cause problems with headspace. Our most popular cast bullet for this caliber is #356402.

TEST COMPONENTS:

Cases Federal; Winchester
 Trim-to Length751"
 Primers CCI 500;
 Winchester 1½-108
 Primer Size Small Pistol
 Lyman Shell Holder No.12
 Cast Bullets Used (size to .358" dia.)
 #358242, 92 gr.
 #358345, 115 gr.
 #356402, 121 gr.

TEST SPECIFICATIONS: (Velocity & Pressure)

Firearm Used Universal Receiver
 Barrel Length 4"
 Twist 1-10"
 Groove Diameter358"



#358242
 92 gr., (#2 Alloy) 1.045" OAL

Powder	Sug. Starting Grains	Velocity F.P.S.	Pressure C.U.P.	Max. Grains	Velocity F.P.S.	Pressure C.U.P.
700X	4.1	1125	22,800	5.1	1285	31,000
PB	4.8	1115	19,800	6.0	1360	33,000
SR-7625	5.0	1180	23,400	5.9	1310	30,500
SR-4756	5.3	1168	22,400	7.2	1380	30,500
Bullseye	4.0	1060	19,800	5.2	1315	32,000
Red Dot	4.1	1120	22,800	5.5	1340	32,500
Green Dot	4.3	1095	20,400	6.0	1325	31,000
Unique	5.0	1065	19,800	6.8	1325	31,500
630	8.5	1121	20,200	12.0	1405	32,100
HS-5	5.9	1101	19,300	*7.6	1376	32,100
AL-5	5.9	1096	19,500	9.0	1405	31,500

Note: Loads shown in shaded panels are maximum.
 *Designates potentially most accurate load.

9mm Luger)
(Continued)



#358345
115 gr., (#2 Alloy) .997" OAL

Powder	Sug. Starting Grains	Velocity F.P.S.	Pressure C.U.P.	Max. Grains	Velocity F.P.S.	Pressure C.U.P.
**700X	3.7	1045	25,200	4.4	1160	32,500
**PB	3.7	995	23,400	4.5	1130	32,000
**SR-7625	3.8	1005	24,000	4.5	1130	31,000
SR-4756	4.2	1005	18,800	6.1	1284	32,000
**Bullseye	3.8	1035	22,800	4.9	1200	31,000
**Red Dot	3.9	1055	24,600	4.9	1200	32,000
**Green Dot	4.0	1030	24,000	5.0	1200	32,500
**Unique	4.5	1025	22,200	5.7	1210	31,500
Blue Dot	5.8	983	16,800	8.4	1339	32,300
630	7.4	1028	18,700	*10.8+	1322	29,700
HS-5	5.0	1000	18,100	7.2	1356	32,800
AL-5	5.0	991	18,900	7.2	1269	28,700

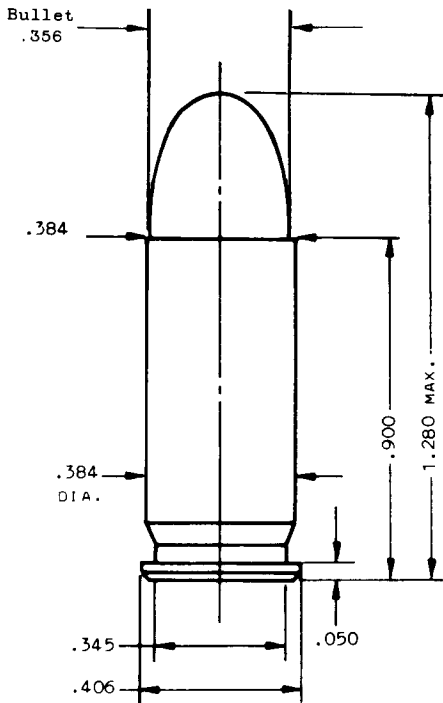


#356402
121 gr., (#2 Alloy) 1.110" OAL

Powder	Sug. Starting Grains	Velocity F.P.S.	Pressure C.U.P.	Max. Grains	Velocity F.P.S.	Pressure C.U.P.
**700X	3.3	975	25,200	4.0	1080	33,000
**PB	3.4	915	20,400	4.3	1095	31,500
**SR-7625	3.5	935	21,000	4.3	1080	31,500
SR-4756	4.0	925	12,500	5.5	1198	32,900
**Bullseye	3.7	950	21,600	4.4	1125	32,000
**Red Dot	3.8	1020	26,400	4.5	1130	32,500
**Green Dot	3.9	970	22,200	4.8	1165	32,500
**Unique	4.3	940	21,000	5.3	1135	31,000
Blue Dot	5.9	973	18,200	8.0	1253	31,600
630	7.2	985	18,800	*10.3	1259	32,400
HS-5	5.3	1001	20,500	6.4	1176	30,200
AL-7	5.4	958	17,900	8.4+	1260	32,900

Note: Loads shown in shaded panels are maximum.
 * Designates potentially most accurate load.
 + Designates a compressed powder charge.
 ** Designates use of Winchester cases and primers.

.38 Super Automatic



TEST COMPONENTS:

Cases Remington
 Trim-to Length895"
 Primers Winchester 1½-108
 Primer Size Small Pistol;
 Lyman Shell Holder No. 12
 Cast Bullets Used (size to .355" dia.)
 *Gas Check Bullets
 #358242, 92 gr.
 #356404, 95 gr.
 #356402, 121 gr.
 #358242, 121 gr.
 #358480, 133 gr.
 #358311, 158 gr.

TEST SPECIFICATIONS: (Velocity and Pressure)

Firearm Used Universal Receiver
 Barrel Length 5"
 Twist 1-16"
 Groove Diameter355"

COMMENTS:

These loads are intended only for those pistols which are chambered for the "Super Auto" cartridge.

For the "Standard .38 Auto" cartridge, it is recommended that you use a bullet of 133 grains or less. Reduce the starting load by ½ grain and work up to the starting load. Do not exceed this load with the "Standard Auto" cartridge.

Because this particular auto cartridge headspaces on case rim, it may be crimped if desired.



#358242
 92 gr., (#2 Alloy) 1.175" OAL

Powder	Sug. Starting Grains	Velocity F.P.S.	Pressure C.U.P.	Max. Grains	Velocity F.P.S.	Pressure C.U.P.
Bullseye	4.2	1022	19,500	5.6	1261	30,900
Unique	5.1	1061	20,400	6.3	1267	30,500
PB	4.3	1009	18,900	5.7	1222	30,500
SR-4756	5.9	1089	19,700	7.1	1263	30,300
231	4.7	1039	20,300	*6.3	1282	31,600
HP38	4.1	1026	20,600	5.8	1246	30,500
HS-5	6.3	1046	19,700	8.0	1308	31,700
AL-120	4.3	1030	20,600	5.8	1245	31,300

38 Super Automatic
(Continued)



#356404
95 gr., (#2 Alloy) 1.130" OAL

Powder	Sug. Starting Grains	Velocity F.P.S.	Pressure C.U.P.	Max. Grains	Velocity F.P.S.	Pressure C.U.P.
Bullseye	4.5	1170	19,800	6.0	1425	31,000
Unique	5.5	1205	19,800	7.2	1460	31,000
700X	4.2	1147	20,200	6.0	1399	30,100
PB	4.9	1195	20,400	6.7	1430	31,500
SR-7625	5.4	1197	20,000	6.7	1429	31,100
231	5.2	1181	20,400	6.4	1433	30,100
HP38	*4.5	1159	20,500	6.2	1403	29,700
AL-120	4.7	1160	20,000	6.3	1395	30,200



#356402
121 gr., (#2 Alloy) 1.230" OAL

Powder	Sug. Starting Grains	Velocity F.P.S.	Pressure C.U.P.	Max. Grains	Velocity F.P.S.	Pressure C.U.P.
Bullseye	4.0	1005	18,600	5.3	1235	30,000
Unique	5.1	1075	20,400	6.0	1255	31,000
700X	4.0	1025	20,600	5.5	1252	29,900
SR-7625	5.1	1099	20,600	6.6	1274	29,900
231	5.0	1092	20,700	*6.5	1307	30,800
HP38	4.4	1063	20,900	5.9	1267	29,700
HS-5	6.8	1089	19,200	8.4	1341	30,700
AL-120	4.5	1040	19,000	6.0	1235	29,800



#358242
121 gr., (#2 Alloy) 1.160" OAL

Powder	Sug. Starting Grains	Velocity F.P.S.	Pressure C.U.P.	Max. Grains	Velocity F.P.S.	Pressure C.U.P.
Bullseye	3.9	970	17,600	5.4	1214	29,200
Unique	4.9	1031	20,000	6.4	1281	28,800
700X	3.7	979	19,800	5.3	1206	29,200
SR-7625	4.2	978	18,100	5.8	1230	29,300
231	4.3	988	17,700	5.8	1233	29,600
HP38	3.9	975	17,800	5.6	1230	29,400
HS-5	6.1	1030	18,200	7.6	1269	30,600
AL-120	3.8	952	17,200	5.4	1207	29,000



#358480
133 gr., (#2 Alloy) 1.115" OAL

Powder	Sug. Starting Grains	Velocity F.P.S.	Pressure C.U.P.	Max. Grains	Velocity F.P.S.	Pressure C.U.P.
SR-4756	5.0	975	16,900	7.0	1237	29,400
Bullseye	4.0	1000	19,800	5.3	1180	31,500
Unique	5.1	1045	21,000	6.0	1200	30,000
Blue Dot	6.8	1042	18,500	8.9	1346	30,100
630	8.4	1054	18,100	*10.6	1268	30,000
HS-6	5.9	1026	18,000	7.8	1303	30,200
AL-7	6.7	1041	18,700	8.6	1278	29,800

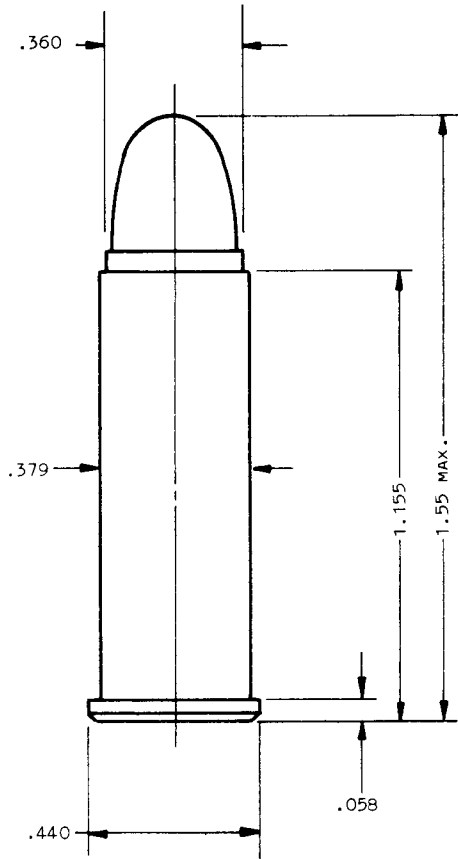


#358311
158 gr., (#2 Alloy) 1.245" OAL

Powder	Sug. Starting Grains	Velocity F.P.S.	Pressure C.U.P.	Max. Grains	Velocity F.P.S.	Pressure C.U.P.
SR-4756	4.9	927	18,900	5.8	1085	29,800
Unique	4.4	958	20,100	5.1	1058	28,100
Herco	4.5	920	21,000	5.4	1058	29,000
Blue Dot	6.5	987	20,900	7.6	1133	28,400
630	7.8	985	20,900	*9.3	1110	28,600
HS-7	6.8	956	20,200	8.3	1100	28,200

Note: Loads shown in shaded panels are maximum.
*Designates potentially most accurate load.

.38 Special



COMMENTS:

Handguns of various makes and models will occasionally vary in groove diameter. It is wise to slug your barrel before selecting a sizing die. Size cast bullets to as near actual groove diameter as possible.

Loads designated with the symbol (+P) are higher pressure loads to give greater velocities. These loads should be used only in arms recommended for (+P) type cartridges by the gun manufacturer. Repeated use of these high pressure loads in handguns with aluminum frames or aluminum cylinders or with lightweight steel frames or cylinders, is not recommended.

For mid-range loads, we suggest bullet #358495 loaded at starting load velocities. Bullet #358311 duplicates the factory 158 grain service bullet very closely while Bullet #358429 is an excellent "Keith type" hunting bullet.

TEST COMPONENTS:

Cases Federal
 Trim-to Length 1.149"
 Primers CCI 500
 Primer Size Small Pistol
 Lyman Shell Holder No. 1
 Cast Bullets Used (size to .357" dia.)
 *Gas Check

#358242, 92 gr.
 #358242, 121 gr.
 #356402, 121 gr.
 #358495, 141 gr.
 #358212, 146 gr.
 #35863 , 148 gr.
 #35891, 148 gr.
 *#358156, 158 gr.
 #358311, 158 gr.
 #357446, 162 gr.
 #358429, 168 gr.

TEST SPECIFICATIONS: (Velocity & Pressure)

Firearm Used Universal Receiver and
 Special Vented Barrel
 Barrel Length 4"
 Twist 1-18³/₄"
 Groove Diameter357"



#358242
 92 gr., (Linotype) 1.456" OAL

Powder	Sug. Starting Grains	Velocity F.P.S.	Pressure C.U.P.	Max. Grains	Velocity F.P.S.	Pressure C.U.P.
700X	3.0	675	5,700	*5.0	1107	15,700
				(+P)5.3	1168	18,300
Bullseye	3.3	765	7,600	5.3	1110	15,700
				(+P)5.6	1168	17,600
Red Dot	3.8	830	8,800	5.2	1108	16,300
				(+P)5.5	1154	17,700
231	3.5	689	5,900	5.7	1104	16,300
				(+P)6.0	1163	17,800
HP38	3.6	836	9,100	5.0	1098	16,500
HS-5	6.5	892	9,400	8.4	1168	16,800
AL-5	6.0	911	10,400	7.9	1145	16,300

Note: Loads shown in shaded panels are maximum.

* Designates potentially most accurate load.

(+P) Designates higher pressure loads. See COMMENTS.

**.38 Special
(Continued)**



#358242
121 gr., (Linotype) 1.450" OAL

Powder	Sug. Starting Grains	Velocity F.P.S.	Pressure C.U.P.	Max. Grains	Velocity F.P.S.	Pressure C.U.P.
700X	2.5	647	7,600	3.9	940	16,200
				(+P)4.2	987	17,900
SR-7625	4.0	788	10,600	5.0	988	16,200
Bullseye	2.8	690	8,600	*4.6	1001	16,400
				(+P)4.9	1045	18,400
Red Dot	3.3	749	10,100	4.6	974	16,200
				(+P)5.0	1047	18,400
Unique	4.0	725	9,000	5.7	1012	16,200
231	3.4	693	8,800	5.1	986	16,600
				5.4	1036	17,900
HP38	3.0	725	9,600	4.3	961	16,700
				(+P)4.8	1045	18,300
HS-5	5.0	727	9,200	7.1	998	16,000
AL-5	4.7	732	9,600	6.4	975	16,000



#356402
121 gr., (Linotype) 1.550" OAL

Powder	Sug. Starting Grains	Velocity F.P.S.	Pressure C.U.P.	Max. Grains	Velocity F.P.S.	Pressure C.U.P.
700X	2.7	649	7,500	4.2	967	16,700
				(+P)4.5	1012	18,300
SR-7625	4.0	725	8,500	5.3	1003	16,400
Bullseye	3.8	847	11,400	*5.0	1048	16,500
				(+P)5.3	1068	18,200
Unique	3.9	774	9,700	5.0	994	15,700
				(+P)5.8	1083	17,900
231	3.5	765	9,500	4.8	1008	16,100
				(+P)5.2	1054	18,000
HP38	3.5	794	10,900	4.5	1013	16,100
				(+P)4.9	1059	17,900
HS-5	4.8	697	8,100	7.3	940	16,600
AL-5	4.8	666	9,000	7.0	1012	15,800



#358495
141 gr., (Linotype) 1.310" OAL

Powder	Sug. Starting Grains	Velocity F.P.S.	Pressure C.U.P.	Max. Grains	Velocity F.P.S.	Pressure C.U.P.
700X	2.2	636	8,300	4.0	994	16,600
SR-7625	3.1	683	9,100	4.3	905	15,600
Bullseye	3.0	778	11,000	4.1	973	16,800
Red Dot	2.8	706	9,500	4.2	961	16,300
Unique	3.8	757	10,300	5.3	1013	16,700
231	3.0	667	8,500	*4.9	1001	16,800
HP38	2.7	683	9,000	4.5	1001	16,800
HS-5	4.0	643	7,800	6.4	990	16,300
AL-5	4.0	660	8,400	6.3	991	16,300



#358212
146 gr., (Linotype) 1.515" OAL

Powder	Sug. Starting Grains	Velocity F.P.S.	Pressure C.U.P.	Max. Grains	Velocity F.P.S.	Pressure C.U.P.
700X	2.8	674	9,400	*4.0	881	15,900
SR-7625	3.5	594	6,900	5.0	899	16,100
Bullseye	2.7	612	8,000	4.3	906	15,800
Red Dot	2.8	650	8,800	4.3	917	16,400
Unique	3.7	652	9,000	5.4	928	15,900
231	3.2	617	7,900	5.0	930	16,700
HP38	3.0	654	9,300	4.4	900	16,500
HS-5	4.8	650	8,100	7.0	935	16,000
AL-5	4.8	656	8,400	6.6	902	15,500

Note: Loads shown in shaded panels are maximum.
*Designates potentially most accurate load.
(+P)Designates higher pressure loads. See COMMENTS.



#35863
148 gr., (Linotype) 1.152" OAL

Powder	Sug. Starting Grains	Velocity F.P.S.	Pressure C.U.P.	Max. Grains	Velocity F.P.S.	Pressure C.U.P.
700X	2.0	584	6,900	3.5	961	16,300
SR-7625	2.8	674	8,700	4.0	928	15,800
Bullseye	2.4	664	8,400	3.8	950	16,100
Red Dot	2.5	678	8,700	3.7	945	15,900
Unique	3.1	670	8,100	4.6	994	16,800
231	2.5	600	6,600	4.1	957	16,000
HP38	2.7	750	10,400	3.9	972	16,400
HS-5	4.0	778	10,900	*5.8	981	16,400
AL-5	3.3	588	6,700	5.4	988	15,700



#35891
148 gr., (Linotype) 1.317" OAL

Powder	Sug. Starting Grains	Velocity F.P.S.	Pressure C.U.P.	Max. Grains	Velocity F.P.S.	Pressure C.U.P.
700X	2.0	512	6,000	3.6	889	15,900
SR-7625	2.8	517	5,800	4.7	958	16,500
Bullseye	2.8	568	8,900	4.4	953	16,200
Red Dot	2.7	524	7,900	4.1	939	16,800
Unique	3.4	660	8,500	5.0	948	16,100
231	2.8	626	7,900	*4.6	914	15,600
HP38	2.0	635	8,700	4.1	911	16,700
HS-5	4.2	657	8,800	6.4	965	16,400
AL-5	4.3	647	8,300	6.7	986	16,800



#358156
158 gr., (Linotype) 1.460" OAL

Powder	Sug. Starting Grains	Velocity F.P.S.	Pressure C.U.P.	Max. Grains	Velocity F.P.S.	Pressure C.U.P.
PB	3.0	584	8,700	4.2	825	16,200
SR-4756	4.2	630	9,500	5.5	898	16,700
Bullseye	2.8	638	10,000	*4.0	858	16,000
				‡(+P)4.4	915	18,100
Unique	3.4	601	8,900	5.1	895	16,100
				(+P)5.4	954	18,000
Blue Dot	6.0	686	10,400	7.2	867	15,700
231	3.5	680	11,100	4.7	885	16,800
				(+P)5.0	934	18,000
630	6.3	659	10,000	8.5	896	16,500
HS-6	4.4	564	8,000	6.7	894	16,600
AL-7	5.0	649	10,400	6.7	889	16,600
HP38	2.8	642	10,200	3.9	854	16,300
				(+P)4.1	882	17,800



#358311
158 gr., (Linotype) 1.550" OAL

Powder	Sug. Starting Grains	Velocity F.P.S.	Pressure C.U.P.	Max. Grains	Velocity F.P.S.	Pressure C.U.P.
PB	3.0	604	7,900	4.5	871	16,100
SR-4756	4.2	620	8,700	5.5	874	16,000
Bullseye	2.8	656	10,000	4.2	880	16,200
				‡(+P)4.5	931	18,200
Unique	3.4	611	8,300	5.1	896	16,400
				(+P)5.4	946	18,000
Blue Dot	5.9	673	9,100	7.8	919	16,400
231	3.5	675	9,600	*4.9	906	16,800
				(+P)5.2	956	18,500
630	6.3	663	9,000	8.9	895	16,000
HS-6	4.5	610	8,200	6.7	901	16,200
AL-7	5.8	716	10,000	7.0	897	15,700
HP38	2.6	621	8,800	4.3	902	16,900
				(+P)4.5	944	18,400

Note: Loads shown in shaded panels are maximum.

* Designates potentially most accurate load.

+ Designates a compressed powder charge.

‡ Designates factory velocity duplication load.

**.38 Special
(Continued)**



#357446
162 gr., (Linotype) 1.457" OAL

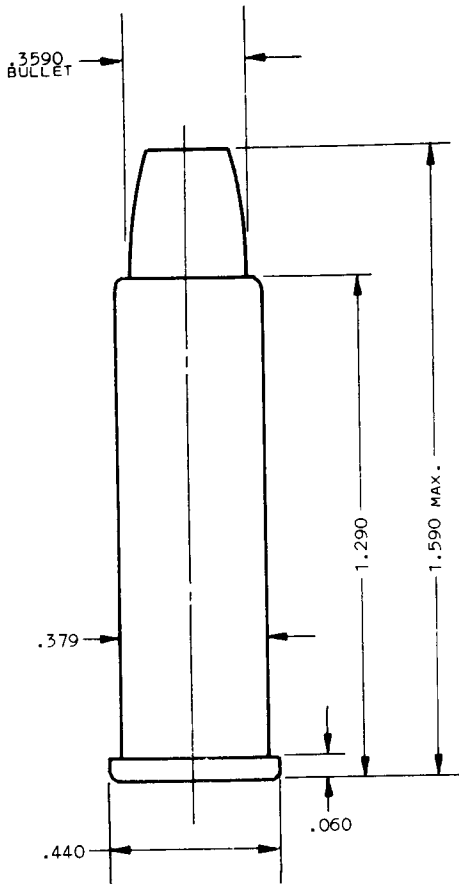
Powder	Sug. Starting Grains	Velocity F.P.S.	Pressure C.U.P.	Max. Grains	Velocity F.P.S.	Pressure C.U.P.
PB	3.4	646	9,500	4.6	877	16,300
SR-4756	4.6	694	10,400	5.8	921	16,800
Bullseye	3.0	680	10,100	4.2	889	16,900
Unique	3.5	639	8,900	5.2	914	16,200
Blue Dot	5.8	675	9,500	7.7	948	16,500
231	3.4	702	10,400	4.6	896	16,000
630	6.3	683	10,100	*8.6	920	15,900
HS-6	5.1	690	9,600	6.7	922	16,100
AL-7	5.2	671	9,700	6.9	909	16,200



#358429
168 gr., (Linotype) 1.537" OAL

Powder	Sug. Starting Grains	Velocity F.P.S.	Pressure C.U.P.	Max. Grains	Velocity F.P.S.	Pressure C.U.P.
SR-7625	3.4	621	9,700	4.6	821	16,300
SR-4756	4.2	645	10,000	5.4	836	16,400
Bullseye	2.6	597	9,300	4.2	850	16,800
Unique	3.8	673	11,000	5.0	860	16,700
Blue Dot	5.5	647	10,000	7.3	869	16,500
231	3.0	599	9,300	4.6	855	16,900
630	6.1	660	9,900	*8.4	869	16,500
HS-6	5.0	677	11,000	6.4	856	16,800
AL-7	5.4	717	11,900	6.9	879	16,700

.357 Magnum



TEST COMPONENTS:

Cases Federal
 Trim-to Length 1.285"
 Primers CCI 550
 Primer Size Small Pistol Magnum
 Lyman Shell Holder No. 1
 Cast Bullets Used (size to .357" dia.)
 *Gas Check Bullets

- #358242, 92 gr.
- #358345, 115 gr.
- #358242, 121 gr.
- #356402, 121 gr.
- #358480, 133 gr.
- #358495, 141 gr.
- #358477, 150 gr.
- *#358156, 155 gr.
- #358311, 158 gr.
- #358429, 168 gr.

TEST SPECIFICATIONS: (Velocity and Pressure)

Firearm Used Universal Receiver and
 Special Vented Barrel
 Barrel Length 4"
 Twist 1-18 1/4"
 Groove Diameter356"

COMMENTS:

Do not use .38 Special cases for .357 Magnum loads. Use of the smaller case will increase pressure.

Depending upon their manufacture, some variations in groove diameter exist in these handguns. Slug your bore before reloading and size cast bullets to exact groove diameter.

In order to hold the maximum overall length below 1.590", it is sometimes necessary to crimp cast bullets on the forward edge of the first driving band.

For those desiring a mid-range load, we suggest bullet #358495 at starting load velocities. Bullet #358156 is extremely popular and an excellent choice for the heavier loads. Another great favorite is the "Keith type" bullet #358429. Refer to Opening Remarks when using Winchester 296 powder.



#358242
 92 gr. (Linotype) 1.585" OAL

Powder	Sug. Starting Grains	Velocity F.P.S.	Pressure C.U.P.	Max. Grains	Velocity F.P.S.	Pressure C.U.P.
700X	6.0	1206	19,700	*8.3	1581	41,500
SR-7625	7.5	1262	20,700	9.8	1613	40,900
Bullseye	7.5	1365	25,900	9.5	1630	39,900
231	8.1	1329	25,600	10.1	1629	41,200
630	14.9	1385	23,900	18.1	1717	40,700
HS-5	10.8	1404	25,700	13.6	1671	38,500
AL-5	9.2	1283	21,900	12.2	1645	39,400

Note: Loads shown in shaded panels are maximum.
 *Designates potentially most accurate load.

**.357 Magnum
(Continued)**



#358345
115 gr., (Linotype) 1.465" OAL

Powder	Sug. Starting Grains	Velocity F.P.S.	Pressure C.U.P.	Max. Grains	Velocity F.P.S.	Pressure C.U.P.
SR-7625	5.4	1036	17,600	*8.3	1446	41,900
SR-4756	6.8	1137	19,600	12.0	1626	41,900
Unique	7.5	1233	24,300	9.2	1489	41,400
Blue Dot	9.4	1134	20,400	12.8	1586	41,200
231	6.4	1166	23,900	8.4	1442	40,600
630	11.9	1226	23,100	15.5	1564	42,000
HS-5	8.0	1086	17,900	11.7	1548	41,700
AL-5	7.5	1070	18,500	10.5	1494	40,700



#358242
121 gr., (Linotype) 1.585" OAL

Powder	Sug. Starting Grains	Velocity F.P.S.	Pressure C.U.P.	Max. Grains	Velocity F.P.S.	Pressure C.U.P.
SR-7625	5.5	974	17,500	8.0	1335	41,100
Unique	6.9	1088	21,100	9.1	1409	42,000
2400	13.0	1178	25,700	16.4	1494	41,700
630	*11.4	1102	20,300	14.9	1439	39,500
HS-7	10.0	1053	18,400	13.2	1436	40,300
AL-8	9.0	925	16,300	11.9	1383	40,500



#356402
121 gr., (Linotype) 1.590" OAL

Powder	Sug. Starting Grains	Velocity F.P.S.	Pressure C.U.P.	Max. Grains	Velocity F.P.S.	Pressure C.U.P.
SR-7625	7.0	1205	23,000	*8.8	1429	41,600
Unique	7.2	1134	15,800	9.4	1482	41,300
Blue Dot	10.8	1156	17,000	13.0	1564	41,400
2400	13.5	1140	17,300	19.5+	1585	37,200
630	12.4	1230	20,800	15.5	1520	40,200
AL-8	10.3	1087	16,000	13.0	1481	40,300



#358480
133 gr., (Linotype) 1.508" OAL

Powder	Sug. Starting Grains	Velocity F.P.S.	Pressure C.U.P.	Max. Grains	Velocity F.P.S.	Pressure C.U.P.
IMR-4227	12.0	1045	21,700	17.4	1421	40,200
Unique	6.2	1006	18,300	8.6	1356	40,300
Blue Dot	10.0	1162	18,800	11.6	1426	41,000
2400	11.8	1058	15,500	16.8	1501	40,200
630	11.2	1130	17,300	*14.8	1466	40,900
AL-8	9.5	1096	19,100	12.7	1461	41,500



#358495
141 gr., (Linotype) 1.435" OAL

Powder	Sug. Starting Grains	Velocity F.P.S.	Pressure C.U.P.	Max. Grains	Velocity F.P.S.	Pressure C.U.P.
IMR-4227	12.3	1084	22,200	*16.3+	1365	39,600
Unique	5.8	960	14,600	7.9	1289	40,300
Blue Dot	9.6	1134	21,800	11.2	1382	40,600
2400	10.5	1015	18,200	14.6	1376	39,700
630	9.9	1032	16,600	13.5	1369	40,100
HS-7	9.8	1130	23,200	11.8	1356	40,700
AL-8	8.8	1012	19,800	11.6	1334	41,000



#358477
150 gr., (Linotype) 1.510" OAL

Powder	Sug. Starting Grains	Velocity F.P.S.	Pressure C.U.P.	Max. Grains	Velocity F.P.S.	Pressure C.U.P.
IMR-4227	11.8	1044	21,700	16.0+	1333	40,200
Herco	6.2	972	17,700	7.8	1225	41,900
Blue Dot	8.2	950	13,000	10.8	1356	41,200
2400	11.0	998	17,900	15.0	1362	41,400
630	10.0	1029	18,400	*13.0	1311	39,900
**296	—	—	—	17.8	1452	41,900
H110	12.4	1075	17,300	17.7	1459	41,200
AL-8	8.8	1046	23,000	10.4	1263	40,900

Note: Loads shown in shaded panels are maximum.
 * Designates potentially most accurate load.
 + Designates a compressed powder charge.
 ** Reduced loads not recommended by Winchester.



#358156
155 gr., (Linotype) 1.590" OAL

Powder	Sug. Starting Grains	Velocity F.P.S.	Pressure C.U.P.	Max. Grains	Velocity F.P.S.	Pressure C.U.P.
IMR-4227	11.4	973	24,100	*15.2	1254	41,300
Herco	5.0	785	16,300	7.5	1151	41,000
Blue Dot	8.5	975	21,500	10.5	1277	40,800
2400	10.6	999	24,900	14.0	1299	41,900
**296	—	—	—	15.6	1334	39,700
630	9.6	953	20,900	13.2	1286	42,000
H110	11.6	1037	21,800	15.7	1363	40,300
AL-8	8.2	919	22,100	10.7	1235	41,500



#358311
158 gr., (Linotype) 1.590" OAL

Powder	Sug. Starting Grains	Velocity F.P.S.	Pressure C.U.P.	Max. Grains	Velocity F.P.S.	Pressure C.U.P.
SR-4759	10.0	874	12,000	14.0+	1189	30,100
IMR-4227	11.8	977	19,600	*17.0+	1345	40,600
Herco	6.3	963	18,700	7.9	1203	41,000
Blue Dot	8.2	888	11,600	10.9	1316	39,200
2400	11.4	1024	20,200	15.5	1344	39,700
**296	—	—	—	18.0	1461	41,400
630	10.3	1016	18,000	13.6	1316	40,400
H110	13.0	1115	19,100	18.3	1460	40,100
AL-8	8.9	973	18,700	±10.8	1257	39,400

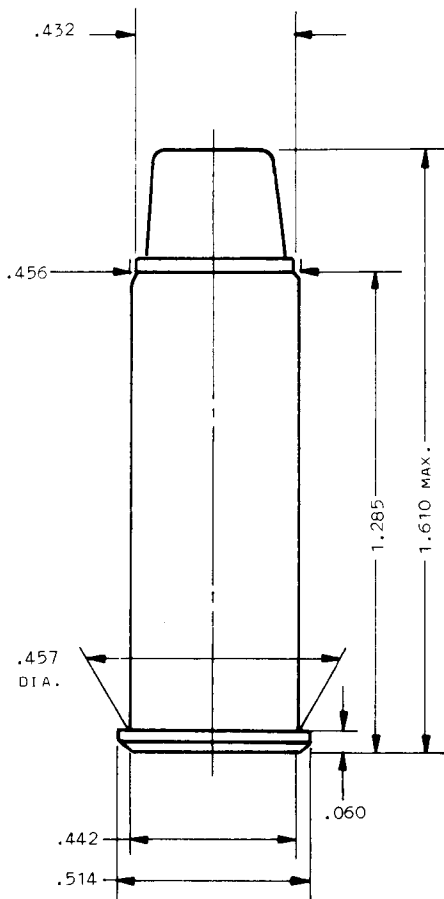


#358429
168 gr., (Linotype) 1.553" OAL

Powder	Sug. Starting Grains	Velocity F.P.S.	Pressure C.U.P.	Max. Grains	Velocity F.P.S.	Pressure C.U.P.
SR-4759	9.8	942	18,400	13.5+	1206	40,600
IMR-4227	9.8	835	14,100	14.5+	1233	40,800
Herco	5.6	885	17,900	7.1	1104	39,000
Blue Dot	8.3	970	18,400	10.0	1233	39,200
2400	9.7	879	15,900	13.5	1242	41,100
**296	—	—	—	15.2	1307	39,900
630	9.7	1012	21,400	12.5	1247	41,100
H110	*11.8	1037	18,900	15.7	1318	39,800
AL-8	8.3	882	19,500	11.2	1208	41,000

Note: Loads shown in shaded panels are maximum.
 * Designates potentially most accurate load.
 + Designates a compressed powder charge.
 ‡ Designates factory velocity duplication load.
 ** Reduced loads not recommended by Winchester.

.44 Remington Magnum



COMMENTS:

To prevent bullet movement when the gun is under recoil, the cartridge requires a hard crimp on all of the heavier loads.

Cast bullet #'s 429303, 429215, 429360, 429244, 429421 list overall lengths that exceed the maximum of 1.610" and are suitable only for the Thompson/Center Contender or similar firearms that will accept cartridges of these dimensions. The data listed for these bullets take this extra length into consideration.

Overall length with bullet #429303 - 1.692".

Overall length with bullet #429215 - 1.645".

Overall length with bullet #429360 - 1.660".

Overall length with bullet #429244 - 1.680".

Overall length with bullet #429421 - 1.710".

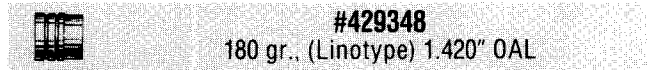
Bullet #429348, loaded to starting load velocities, is recommended for mid-range use, while bullet #429215 is suggested as the best all around choice.

TEST COMPONENTS:

Cases	Remington
Trim-to Length	1.280"
Primers	CCI 300
Primer Size	Large Pistol
Lyman Shell Holder	No. 7
Cast Bullets Used	(size to .429" dia.)
*Gas Check Bullets	#429348, 180 gr.
	*#429303, 200 gr.
	*#429215, 215 gr.
	#429360, 232 gr.
	#429421, 245 gr.
	*#429244, 245 gr.

TEST SPECIFICATIONS: (Velocity and Pressure)

Firearm Used	Universal Receiver and Special Vented Barrel
Barrel Length	4"
Twist	1-20"
Groove Diameter429"



Powder	Sug. Starting Grains	Velocity F.P.S.	Pressure C.U.P.	Max. Grains	Velocity F.P.S.	Pressure C.U.P.
SR-4756	11.9	1096	23,300	15.8	1359	36,900
IMR-4227	22.7	1065	21,700	27.0+	1394	35,900
Unique	11.0	1079	22,500	13.5	1343	36,500
Blue Dot	16.1	1110	22,600	20.4	1408	35,800
2400	20.3	1190	22,000	25.3+	1410	36,100
231	9.0	1002	22,000	12.6	1315	36,700
630	17.6	1144	24,500	*21.8	1390	36,000
HS-6	14.2	1082	23,200	17.3	1352	36,400
AL-7	15.7	1075	22,900	19.0	1361	36,500
Herco	11.7	1049	22,800	14.6	1344	36,400

Note: Loads shown in shaded panels are maximum.

*Designates potentially most accurate load.

+Designates a compressed powder charge.

.44 Remington Magnum
(Continued)



#429303
200 gr., (Linotype) 1.692" OAL

Powder	Sug. Starting Grains	Velocity F.P.S.	Pressure C.U.P.	Max. Grains	Velocity F.P.S.	Pressure C.U.P.
SR-4756	12.3	1043	22,600	15.5	1289	36,700
IMR-4227	22.0	1038	22,100	24.5+	1201	29,600
Unique	11.0	1004	22,100	13.2	1265	36,700
Herco	11.4	1035	24,300	13.8	1245	36,700
Blue Dot	15.8	1062	22,800	19.8	1363	36,800
2400	19.0	991	20,400	24.0+	1314	34,600
231	9.1	913	19,600	*12.6	1231	36,900
630	17.5	1049	23,300	21.5	1317	36,500
HS-6	14.2	1020	22,000	17.3	1295	36,900
AL-7	16.0	999	20,400	19.0	1318	36,300



#429215
215 gr., (Linotype) 1.645" OAL

Powder	Sug. Starting Grains	Velocity F.P.S.	Pressure C.U.P.	Max. Grains	Velocity F.P.S.	Pressure C.U.P.
SR-4756	12.2	1036	24,900	15.2	1228	36,100
IMR-4227	21.8	1017	22,100	25.5+	1227	32,800
Unique	10.0	930	21,000	13.2	1221	36,000
Herco	11.4	984	22,800	13.5	1205	36,000
Blue Dot	15.7	1032	23,500	19.5	1314	37,000
2400	20.0	986	21,800	25.0	1310	37,000
231	*9.3	914	21,000	12.8	1191	37,000
630	17.8	1037	24,100	21.5	1269	36,500
HS-6	13.5	985	21,700	16.5	1238	36,000
AL-7	14.5	997	20,600	18.7	1280	34,900



#429360
232 gr., (Linotype) 1.655" OAL

Powder	Sug. Starting Grains	Velocity F.P.S.	Pressure C.U.P.	Max. Grains	Velocity F.P.S.	Pressure C.U.P.
SR-4756	9.9	887	16,000	13.3	1145	36,100
IMR-4227	20.2	961	21,900	24.5	1236	36,100
Unique	9.5	896	16,100	12.7	1159	36,200
Herco	10.7	937	23,300	13.5	1163	36,500
Blue Dot	14.4	952	20,400	18.2	1240	36,300
2400	18.5	998	22,700	23.0	1256	36,700
630	15.6	947	21,900	*19.6	1201	36,100
HS-6	12.5	921	20,800	16.2	1177	36,600
AL-8	15.0	924	21,400	20.0+	1229	36,700



#429421
245 gr., (Linotype) 1.710" OAL

Powder	Sug. Starting Grains	Velocity F.P.S.	Pressure C.U.P.	Max. Grains	Velocity F.P.S.	Pressure C.U.P.
SR-4756	11.4	927	20,500	13.1	1125	36,500
IMR-4227	20.2	938	21,300	24.0+	1196	34,600
Unique	9.8	912	20,800	13.0	1147	36,800
Herco	10.9	918	22,900	13.1	1090	34,600
Blue Dot	15.0	941	20,000	18.4	1196	35,300
2400	19.4	974	23,500	23.4	1232	36,000
630	17.1	1009	25,300	*20.7	1190	36,700
HS-7	15.2	931	20,900	18.2	1171	35,300
AL-8	14.6	856	18,700	19.6	1189	36,700



#429244
245 gr., (Linotype) 1.680" OAL

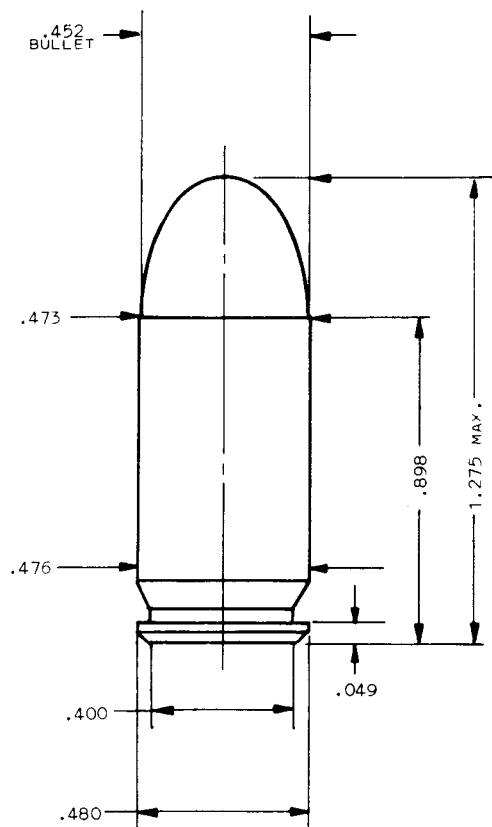
Powder	Sug. Starting Grains	Velocity F.P.S.	Pressure C.U.P.	Max. Grains	Velocity F.P.S.	Pressure C.U.P.
SR-4756	10.5	892	21,500	12.2	1119	35,300
IMR-4227	20.2	903	20,600	24.0+	1135	33,700
Unique	8.9	805	17,500	*12.1	1100	36,400
Herco	11.0	927	24,500	12.4	1085	35,400
Blue Dot	14.0	911	20,300	17.4	1160	34,800
2400	18.2	915	21,600	22.2	1165	35,300
630	16.2	942	23,700	19.3	1146	35,000
HS-7	14.5	921	22,600	17.5	1160	37,000
AL-8	14.4	901	23,200	19.5	1113	34,000

Note: Loads shown in shaded panels are maximum.

* Designates potentially most accurate load.

+ Designates a compressed powder charge.

.45 Automatic (45 ACP)



TEST COMPONENTS:

Cases Federal; Remington
 Trim-to Length895"
 Primers Remington 2½
 Primer Size Large Pistol
 Lyman Shell Holder No. 2
 Cast Bullets Used (size to .450" dia.)
 *Gas Check Bullets #452389, 185 gr.
 #452488, 195 gr.
 #452460, 200 gr.
 #452374, 225 gr.

TEST SPECIFICATIONS: (Velocity and Pressure)

Firearm Used Universal Receiver
 Barrel Length 5"
 Twist 1-16"
 Groove Diameter450"

COMMENTS:

Because this cartridge headspaces on the case mouth, the trim-to length must be adhered to closely and the case should not be crimped. A short case, or a crimp, can cause headspace problems.

While groove dimensions for these handguns will range from .450" - .453", the reloader may have difficulty if he uses a bullet over .451" diameter. Case and chamber dimensions usually provide for a bullet of .451", but larger bullets may bulge cases to the point where they fail to chamber.

Most pistols (unless they are altered) will not feed wadcutter-type bullets such as #452389. Bullet #452460 feeds well in most pistols and, when loaded to starting load velocities, is recommended for mid-range shooting.



#452389
 185 gr., (#2 Alloy) 1.080" OAL

Powder	Sug. Starting Grains	Velocity F.P.S.	Pressure C.U.P.	Max. Grains	Velocity F.P.S.	Pressure C.U.P.
700X	4.0	760	8,800	5.5	1010	17,500
PB	4.6	740	8,300	5.5	920	13,500
SR-7625	5.5	825	9,800	6.5	1030	17,400
SR-4756	5.3	663	8,900	7.9	988	17,600
Bullseye	3.5	660	6,000	5.0	890	12,300
Red Dot	4.0	735	8,100	5.5	970	14,800
Green Dot	4.5	745	8,300	6.0	965	14,800
Unique	5.0	684	6,900	7.5	995	15,500
Blue Dot	7.0	636	7,600	9.2+	844	13,200
231	3.9	662	7,900	6.0	958	17,500
HS-6	5.6	613	7,500	9.1	1034	17,100
AL-5	5.1	621	7,200	*8.3	974	17,300

Note: Loads shown in shaded panels are maximum.

*Designates potentially most accurate load.

+Designates a compressed powder charge.

**#452488**

195 gr., (#2 Alloy) 1.120" OAL

Powder	Sug. Starting Grains	Velocity F.P.S.	Pressure C.U.P.	Max. Grains	Velocity F.P.S.	Pressure C.U.P.
700X	4.0	735	9,600	5.2	950	16,700
PB	4.6	765	10,100	5.5	910	14,800
SR-7625	5.0	780	10,300	6.2	945	16,200
SR-4756	5.3	639	8,600	7.8	977	17,500
Bullseye	3.5	680	7,700	5.0	895	13,900
Red Dot	4.0	730	9,000	5.5	950	16,200
Green Dot	4.5	740	9,400	6.0	955	15,800
Unique	5.0	695	7,900	7.5	1010	16,800
Blue Dot	7.0	646	8,200	10.7	1033	17,900
231	3.9	642	8,500	5.7	962	16,900
HS-6	6.1	652	8,300	9.0	1027	17,900
AL-5	5.8	722	8,600	*8.5	1014	17,800

**#452460**

200 gr., (#2 Alloy) 1.161" OAL

Powder	Sug. Starting Grains	Velocity F.P.S.	Pressure C.U.P.	Max. Grains	Velocity F.P.S.	Pressure C.U.P.
700X	4.0	745	10,300	5.2	940	17,300
PB	4.6	725	9,000	5.5	880	14,200
SR-7625	5.0	735	9,000	6.2	945	17,000
**SR-4756	5.3	704	9,100	7.3	993	17,000
Bullseye	3.5	645	6,900	5.0	860	13,400
Red Dot	4.0	695	8,400	5.3	895	14,700
Green Dot	4.5	715	9,000	5.8	895	14,400
Unique	5.0	670	7,700	7.5	980	16,600
**Blue Dot	7.1	701	8,900	10.6	1012	17,200
**231	4.0	694	9,200	6.0	987	18,000
**HS-6	6.0	690	8,600	8.7	1016	17,700
**AL-5	5.8	729	9,300	*8.4	1008	17,400

**#452374**

225 gr., (#2 Alloy) 1.272" OAL

Powder	Sug. Starting Grains	Velocity F.P.S.	Pressure C.U.P.	Max. Grains	Velocity F.P.S.	Pressure C.U.P.
700X	4.0	695	10,500	5.0	855	17,300
PB	4.8	705	10,300	5.5	810	14,200
SR-7625	5.0	675	9,000	6.0	850	15,200
**SR-4756	5.5	662	8,800	7.5	955	18,000
Bullseye	4.0	680	10,100	5.0	815	14,400
Red Dot	4.3	705	11,000	5.3	835	15,300
Green Dot	4.8	725	11,400	5.8	845	15,100
Unique	5.5	695	10,100	7.3	905	16,500
**Blue Dot	7.5	660	8,600	10.7	964	17,300
**231	4.0	661	9,200	*5.8	902	17,500
**HS-6	6.2	664	8,400	8.6	921	16,600
**AL-5	5.5	657	8,200	8.7	943	16,800

Note: Loads shown in shaded panels are maximum.

* Designates potentially most accurate load.

** Designates use of Federal cases.